

NOTES:  
 CONFORMED SET: 03/06/2026

PROJECT NAME:  
**WESTERN TRANSIT CENTER**  
 ST. CLOUD METROPOLITAN TRANSIT COMMISSION

441 2ND AVENUE SOUTH  
 WAITE PARK, MN 56304

I HEREBY CERTIFY THAT THIS PLAN, SPECIFICATION, OR REPORT WAS PREPARED BY ME OR UNDER MY DIRECT SUPERVISION AND THAT I AM A DULY LICENSED ARCHITECT UNDER THE LAWS OF THE STATE OF MINNESOTA.

SIGNATURE: *Andrew Lopez*

46485 12/22/2025  
 LICENSE # DATE

SHEET NAME:  
**ENLARGED FLOOR PLANS**

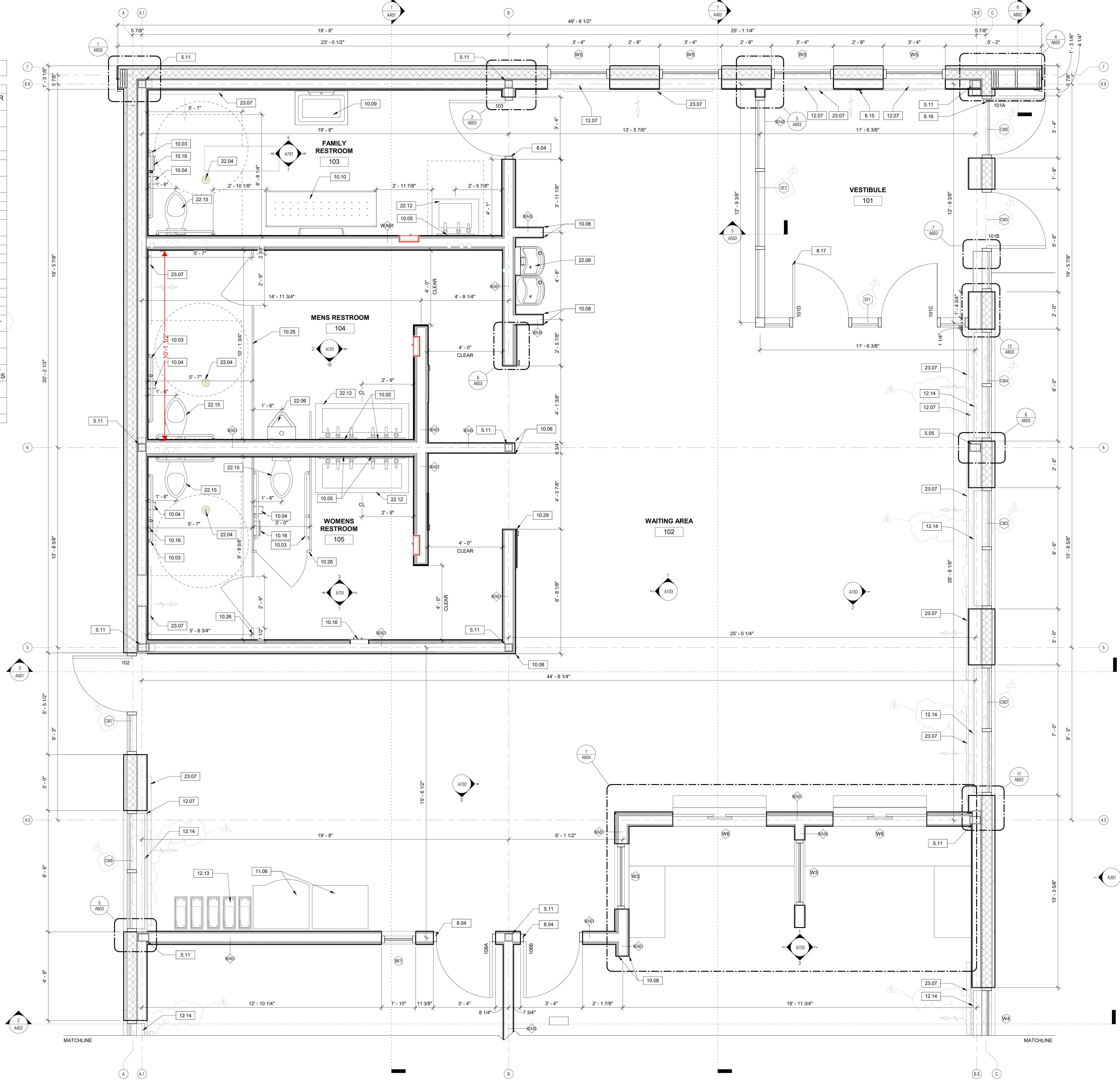
REVISIONS:		
No.	Date	Description
1	2/18/2026	ADDENDUM #2
3	2/27/2026	ADDENDUM #4

25-16 12/22/2025  
 PROJECT NUMBER DATE

J.S. E.S. D.S.G. A.N.C.  
 DRAWN BY CHECKED BY

SHEET NO:  
**A151**

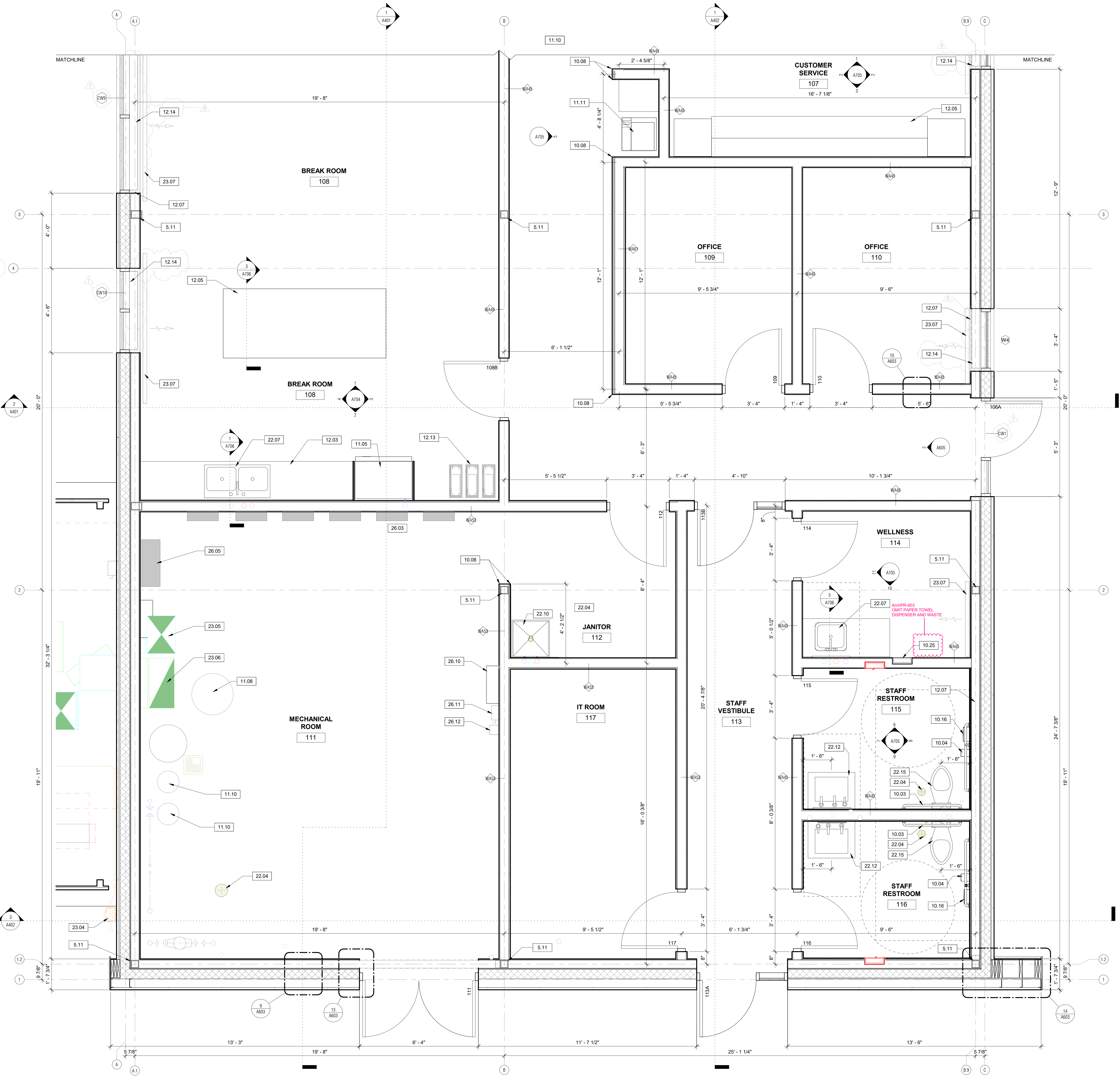
KEYNOTES	
5.05	EXPOSED 5" X 5" STEEL STRUCTURAL COLUMN, PAINT PER SCHEDULE, SEE STRUCTURAL.
5.11	5" X 5" STRUCTURAL STEEL COLUMN - SEE STRUCTURAL FOR DETAILS/NOTES.
8.04	INTERIOR HOLLOW METAL DOOR AND FRAME, RETURN WALL FINISH TO DOOR FRAME, SEE SCHEDULE FOR INFORMATION.
8.15	ADA BARRIER FREE DOOR OPERATOR, PUSH BUTTON.
8.16	EXTERIOR H.M. PADDLE ADA DOOR AND FRAME, PAINT - SEE DOOR SCHEDULE.
8.17	INTERIOR H.M. PADDLE ADA DOOR AND FRAME, PAINT - SEE DOOR SCHEDULE.
10.03	STAINLESS STEEL ADA TOILET GRAB BARS.
10.04	TOILET PAPER HOLDER.
10.05	WALL MOUNTED MIRROR - PROVIDE BLOCKING.
10.08	2" X 2" STAINLESS STEEL CORNER GUARDS UP TO 7'-8" AF.F. - TYP.
10.09	WALL MOUNTED CHANGING TABLE - PROVIDE BLOCKING.
10.10	ADULT CHANGING TABLE - PROVIDE BLOCKING.
10.16	SANITARY NAPKIN DISPOSAL.
10.26	OVERHEAD BRACED TOILET PARTITION - PROVIDE BLOCKING.
10.29	CUSTOM PREFINISHED METAL SHEET CORNER TRIM.
11.06	VENDING MACHINE - SEE MECH.
12.07	SOLID SURFACE WINDOW SILL.
12.13	TRASH AND RECYCLING BINS.
12.14	MANUAL ROLLER SHADE, ATTACHMENT BY CURTAIN WALL PROVIDER.
22.04	FLOOR DRAIN, 1/4" FLOOR DEPRESSION FOR DRAINAGE DISH - SEE MECHANICAL FOR DETAILS/NOTES.
22.06	WALL MOUNTED URINAL - SEE MECHANICAL FOR DETAILS/NOTES.
22.08	DUAL HEIGHT WALL MOUNTED ADA DRINKING FOUNTAINS WITH BOTTLE FILL - SEE MECHANICAL FOR DETAILS/NOTES.
22.12	WALL MOUNTED SINK - SEE MECHANICAL FOR DETAILS/NOTES.
22.15	FLOOR MOUNTED TOILET - SEE MECHANICAL FOR DETAILS/NOTES.
23.07	ELECTRICAL HEATING SYSTEM - SEE MECHANICAL.



**1 ENLARGED PLAN**  
 NORTH 1/2" = 1'-0"

REVISIONS:	No.	Date	Description
	1	2/18/2026	ADDENDUM #2
	3	2/27/2026	ADDENDUM #4

KEYNOTES	
5.11	5" X 5" STRUCTURAL STEEL COLUMN - SEE STRUCTURAL FOR DETAILS/NOTES
10.03	STAINLESS STEEL ADA TOILET GRAB BARS
10.04	TOILET PAPER HOLDER
10.08	2" X 2" STAINLESS STEEL CORNER GUARDS UP TO 7'-8" AF.F. - TYP.
10.16	SANITARY NAPKIN DISPOSAL
10.25	STAINLESS STEEL PAPER TOWEL DISPENSER/WASTE RECEPTACLE - RECESSED
11.05	REFRIGERATOR WITH ICE AND WATER DIPENSER
11.08	WATER HEATER - SEE MECH.
11.10	BRINE TANK - SEE MECH.
11.11	COPY MACHINE BY OWNER
12.03	SOLID SURFACE COUNTERTOP AND BACKSPLASH OVER CASEWORK WITH PLASTIC LAMINATE FINISH AND MELAMINE INTERIOR - SEE INTERIOR ELEVATION FOR LAYOUT AND ADDITIONAL INFORMATION
12.05	SOLID SURFACE ADA-HEIGHT COUNTERTOP WITH PRE-FIN. MTL SUPPORT BRACKETS
12.07	SOLID SURFACE WINDOW SILL
12.13	TRASH AND RECYCLING BINS
12.14	MANUAL ROLLER SHADE, ATTACHMENT BY CURTAIN WALL PROVIDER
22.04	FLOOR DRAIN, 1/4" FLOOR DEPRESSION FOR DRAINAGE DISH - SEE MECHANICAL FOR DETAILS/NOTES
22.07	UNDERMOUNT STAINLESS STEEL SINK - SEE MECHANICAL FOR DETAILS/NOTES
22.10	JANITOR MOP SINK, ADD FRP PANELS WHERE ADJACENT WALLS ARE NOT BLOCK - SEE MECHANICAL FOR DETAILS/NOTES
22.12	WALL MOUNTED SINK - SEE MECHANICAL FOR DETAILS/NOTES
22.15	FLOOR MOUNTED TOILET - SEE MECHANICAL FOR DETAILS/NOTES
23.04	EXTERIOR GAS METER - SEE MECHANICAL
23.05	SUPPLY AIR SYSTEM - SEE MECHANICAL
23.06	RETURN AIR SYSTEM - SEE MECHANICAL
23.07	ELECTRICAL HEATING SYSTEM - SEE MECHANICAL
26.03	POWER DISTRIBUTION EQUIPMENT - SEE ELECTRICAL
26.05	MAIN POWER DISTRIBUTION EQUIPMENT - SEE ELECTRICAL
26.10	WALL MOUNTED CONTROL PANEL - SEE ELECTRICAL
26.11	WALL MOUNTED DISCONNECT FIXTURE SAFETY SWITCH
26.12	DRY TYPE TRANSFORMER



**1 ENLARGED PLAN**  
SOUTH 1/2" = 1'-0" NORTH