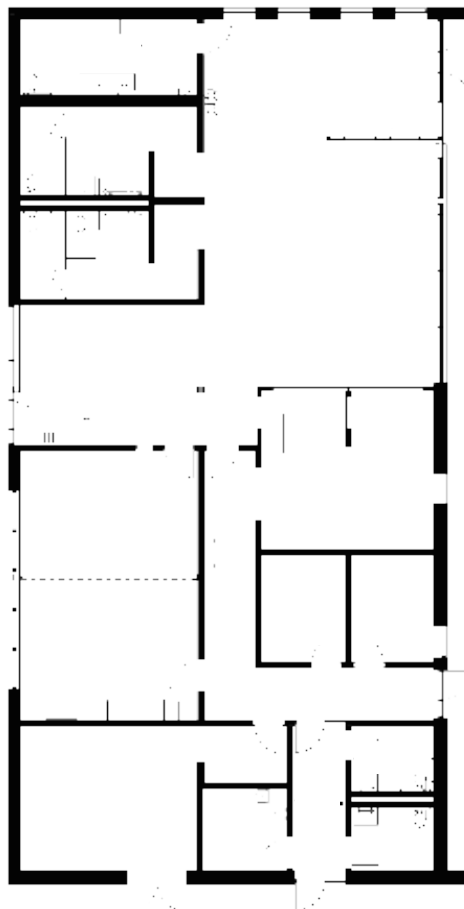


METRO BUS WESTERN TRANSIT CENTER SITE PLAN

The Metro Bus Western Transit Center will be designed as a multimodal transit hub for Metro Bus Fixed Route and Dial-a-Ride services, pedestrians, bicycles and more.



BENEFITS OF THE WESTERN TRANSIT CENTER FOR THE COMMUNITY

Enhances connectivity across the service area in conjunction with the upcoming Metro Bus Forward route realignment

Creates a **drop point on the west side** of the service area to allow for shorter rides

Allows for **more efficient** development of the public transportation system

Increases flexibility for passengers by providing additional transfer options

Optimizes customer experience throughout the service area by reducing congestion at the downtown St. Cloud Transit Center and other hubs

Learn more about Metro Bus Forward at ridemetrobus.com/forward.

METRO BUS
FORWARD





ABOUT METRO BUS

Established in 1969 as
St. Cloud Metropolitan Transit Commission

Operates 7 days a week, 359 days a year

Fixed Route, Dial-a-Ride and commuter
bus services

800,000 passenger trips annually

80 large, small and commuter buses

Service area includes
St. Cloud, Sartell, Sauk Rapids & Waite Park

Provides safe, reliable, friendly public
transportation services

Facilities include
Transit Center in downtown St. Cloud
Mobility Training Center
Operations Center
70 shelters & over 700 signed bus stops
Employs approximately 140 individuals



ABOUT THE WESTERN TRANSIT CENTER

To better serve the growing communities in
the western part of the service area,
Metro Bus is building a second transit
center in Waite Park at the corner of
2nd Ave. S. and Sundial Dr.

Following a Request For Proposal and
vetting process, Metro Bus selected Oertel
Architects to design and build the facility.

The facility is tentatively scheduled to open
in late 2026.

Metro Bus Forward will bring improved
route alignments utilizing the new
Western Transit Center to provide transfers,
pass sales, customer service and more!

METRO BUS
the people picker-uppers.

 **320.251.7433**

 **ridemetrobus.com**

PUBLIC INPUT MEETING WESTERN TRANSIT CENTER

METRO BUS
the people picker-uppers.

**Monday, September 22
4:30-7:30 PM**

St. Cloud Area School District
Administration Office
1201 2nd St. S., Waite Park
Door 5

FOLLETO EN ESPAÑOL
ridemetrobus.com/audiencia-publica

BUUG YAR AF SOOMALI
ridemetrobus.com/dhegeysiga-dadweynaha

